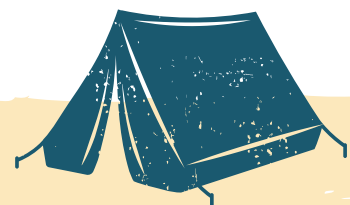
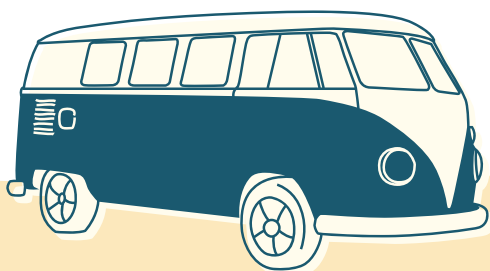
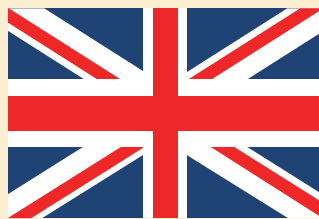




Welcome to "LES ÉTANGS" CAMPSITE



WEBSITE CREDITS
PHOTO (EXCEPT NOTICES) : GIKEY
WEBMASTER : **UN P'TIT COQUELICOT**

AS SOON AS THE FIRST RAYS OF SUN APPEAR,

WE WELCOME YOU AFTER HAVING REFURBISHED THE CAMPSITE. AMONG 70 PITCHES, ONLY FEW ARE DEDICATED TO MOBILE HOMES. TENTS, CARAVANS AND CAMPERS ARE HERE CONSIDERED PRIORITY.

HIKERS, RANCE COAST LOVERS AND FAMILIES WILL ENJOY THE SIMPLE PLEASURES OF NATURE AND CONVIVIALITY. OAK TREES, PINES, EUCALYPTUS OFFER DELICIOUS SHADES, PERFECT FOR A CHEERING AFTERNOON NAP OR REUNION AROUND A TABLE.

AWAY FROM CROWDED PLACES, BUT VERY CLOSE TO SHOPS, THE CAMPSITE GIVES A DIRECT ACCESS TO TENNIS COURTS AND SPORTS FIELDS OF THE VILLAGE.

THE BANKS OF RANCE ARE 400 METERS AWAY.

DISCOVER A SIMPLE AND WELCOMING SETTING,

TO ENJOY COASTAL AND RELAXING HOLIDAYS ! AN AREA SURROUNDED BY TREES, ABOVE THE PONDS, WELCOMES ONCE A WEEK ARTISTS TO PLAY CONCERTS.

FEELING THIRSTY AFTER A DAY AT THE BEACH OR AFTER A LONG WALK? COME HAVE A DRINK AT THE TERRACE BAR.

THE MOBILE HOME,

YOU WILL ENJOY LIFE OUTSIDE AND FEEL HAPPY TO MEET YOUR FAMILY OR FRIENDS IN THE EVENING COMFORTABLY SETTLED IN YOUR SOFA OR ON YOUR TERRACE.

DISCOVER A "SUMMER HOUSE" DECORATION, LIKE THE CAMPSITE, BRIGHT AND HAPPY. HIGH QUALITY BEDDING, FULLY EQUIPPED KITCHEN. OUR MOBILE HOMES ARE INSULATED TO WELCOME YOU ALL YEAR LONG. IT CAN ACCOMMODATE 4 TO 6 PEOPLE.

THE COCOSWEET,

IT IS A BRAND NEW TYPE OF LEISURE ACCOMMODATION WHICH IS FUNCTIONAL AND COSY, FUN AND COMFORTABLE, ALL EQUIPPED WITH ITS 16 SQUARE METERS. COCO, IT IS A NEW WAY TO SPEND YOUR TIME CAMPING, ESPECIALLY WHEN IT IS ATTRACTIVE AND AFFORDABLE.

IT CAN ACCOMMODATE UP TO 4 PEOPLE.

TAKE A LOOK :

[MOBILHOME COCO.COM/EN/](http://MOBILHOME.COCO.COM/EN/)

SERVICES

TO MAKE YOUR STAY PLEASANT, SEVERAL SERVICES ARE AVAILABLE :

AT THE RECEPTION

HOLIDAY-MAKERS WELCOMING
BOOKING
FREE IRONING FACILITIES RENTAL
FRUITS AND VEGETABLES
BASKET SELLING
BREAD AND PASTRIES SELLING
TAXI, RESTAURANT,
DOCTOR RESERVATION
FREE BOARD GAMES RENTAL
TENNIS COURT BOOKING
LOST AND FOUND
INFORMATION ON ST MALO
AND THE COAST
SLEEPING KIT RENTING
TOKENS FOR
LAUNDRY FACILITIES

INSIDE THE CAMPSITE

TOILETS AND ACCESS
FOR DISABLED GUESTS
LAUNDRY : WASHING MACHINE
AND TUMBLE DRYER
TENNIS
KITCHENETTE FOR HIKERS :
MICROWAVE, KETTLE AND DISHES
NURSERY : BABY-CHANGING AND BABY BATH
SERVICE AREA FOR CAMPERs :
FREE ACCESS FOR CAMPSITE RESIDENTS
CHILDREN PLAYGROUND
RELAXATION AREA :
GREENHOUSE AND LIBRARY

ENTERTAINMENT AND WHAT'S ON ?

ENTERTAINMENT DIVERSITY :

THEME EVENING : CHILDREN, DANCING,
SOCCER, MUSSELS AND CHIPS,...

CONTEST : DRAWING, PETANQUE, ...

LESSON : GARDENING, FISHING,...

WHAT'S ON ?

FOLLOW US ON OUR FACEBOOK PAGE
TO DISCOVER ALL THE BEST MOMENTS !



@CAMPINGLARICHARDAIS

WHAT TO DO AROUND ?

ON YOUR HOLIDAYS PROGRAMME : WONDERMENT, AUTHENTICITY,
TRANQUILLITY.

RELAX AND ENJOY THE REGION WONDERS BY HIKING, GOING TO THE
BEACH, FISHING AND LEARNING THE AREA HISTORY.



SAINT MALO TOURIST OFFICE
SAINT-MALO-TOURISME.CO.UK

DINAN TOURIST OFFICE
DINAN-TOURISME.COM

DINARD TOURIST OFFICE
DINARDTOURISME.COM/EN/

THE ESTUARY

LA RICHARDAIS IS LOCATED AT THE MOUTH OF THE ESTUARY OF THE RANCE. YOU WILL DRIVE ON THE RANCE DAM, A TIDAL POWER STATION BUILT BY EDF DURING THE 1960S, TO REACH DINARD AND SAINT-MALO.

DINARD - ST MALO - DINAN

DISCOVER *DINARD*, A FAMOUS SEASIDE RESORT, THAT BRITISH AND AMERICAN TOURISTS REALLY LIKE FOR ITS VILLAS FROM THE BELLE EPOQUE PERIOD.

SAINT-MALO, HISTORICAL CITY WITH ITS WALLS, THE CITY OF ALET, THE SOLIDOR TOWER, THE HARBOUR AND ITS BEAUTIFUL BEACHES.

DINAN, MEDIEVAL CITY FORTIFIED AND SURROUNDED BY WALLS, WAS PROTECTED BY AN IMPRESSIVE CASTLE.

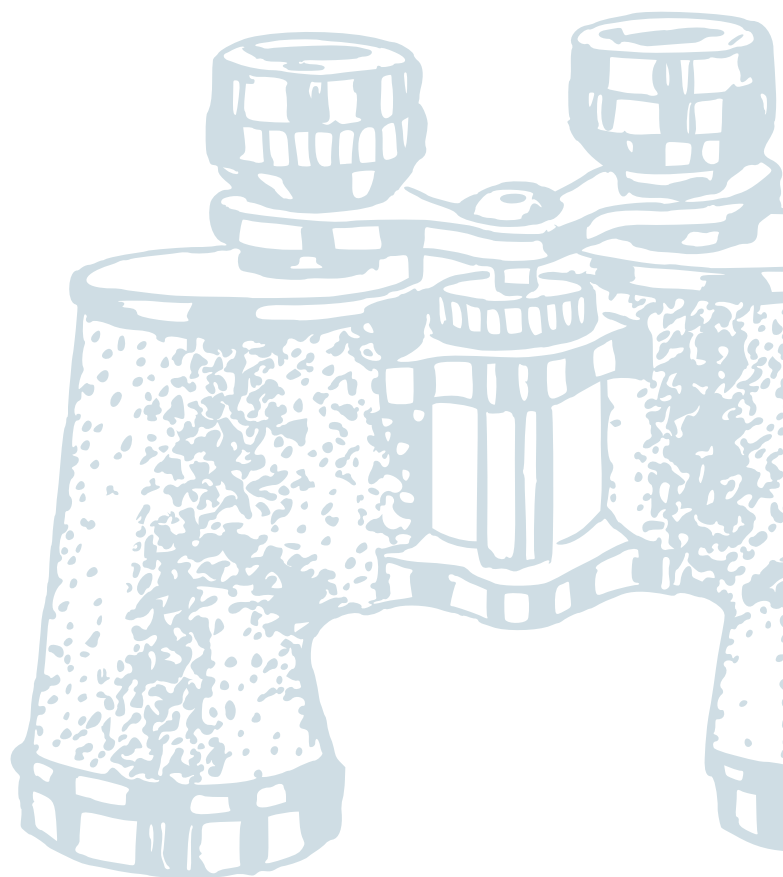
EMERALD COAST

THE EMERALD COAST IS NAMED AFTER *THE COLOUR OF THE SEA* THAT SOMETIMES TURNS EMERALD ON THE NORTH COAST OF BRITTANY BETWEEN CAP FRÉHEL AND CANCALE

THE RANCE VALLEY

IT IS ONE OF THE MOST BEAUTIFUL VALLEYS OF THE REGION.

IT BEGINS AT THE MOUNTS OF Méné in Collinée, in the Côtes-d'Armor department and flows into the English Channel between Dinard and Saint-Malo. DO NOT MISS WALKING OR HIKING ALONG THE RIVER ! YOU WILL DISCOVER *SCENIC VILLAGES*, BEAUTIFUL TYPICAL HOUSES CALLED "*MALOUINIÈRES*", AMONG IMPORTANT FAUNA AND FLORA.



PARTNERS AND LINKS

CAMPSITE PARTNERS

LA RICHARDAIS SAILING SCHOOL

CNR35.FR

LA RICHARDAIS TOWN HALL

VILLE-LARICHARDAIS.FR

MANOLI MUSEUM

MANOLI.ORG/EN

RESTAURANT "L'ESCALE"

L'ESCALE

USEFUL LINKS

SAINT MALO

SAINT-MALO-TOURISME.CO.UK

LA RICHARDAIS

VILLE-LARICHARDAIS.FR

DINAN TOURIST OFFICE

DINAN-TOURISME.COM

DINARD TOURIST OFFICE

DINARDTOURISME.COM/EN/

BRITTANY TOURISM

BRITTANYTOURISM.COM

HIKING GR

WMAKER.NET/OPCC/GR34

MONT ST MICHEL

OT-MONTSAINTMICHEL.COM/EN/

ST MALO AQUARIUM

AQUARIUM-ST-MALO.COM

CLICKABLE ITINERARIES

BY CAR



FROM PARIS

FROM RENNES

FROM CAEN

FROM ST BRIEUC

BY PLANE



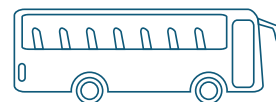
AÉROPORT DE RENNES

BY TRAIN TGV



SNCF

BY COACH



BREIZHGO

BY TAXI



ALLO TAXIS SAINT-MALO

ALLO LES TAXIS BLEUS

ABC TAXI / TONIFLOCA

TAXI JORDAN

ALLO ARNAUD TAXI

+33(0)2 99 81 30 30

+33 (0)2 99 19 87 87

+33 (0)6 10 03 18 86

+33 (0)7 86 25 69 70

+33 (0)6 76 54 72 32

BY BOAT



BRITTANY FERRIES

CAMPSITE LES ÉTANGS

WEBSITE CREDITS

PHOTO (EXCEPT NOTICES) : GIKEY

WEBMASTER : UN P'TIT COQUELICOT